

# Western Region Sustainable Water Strategy (SWS)

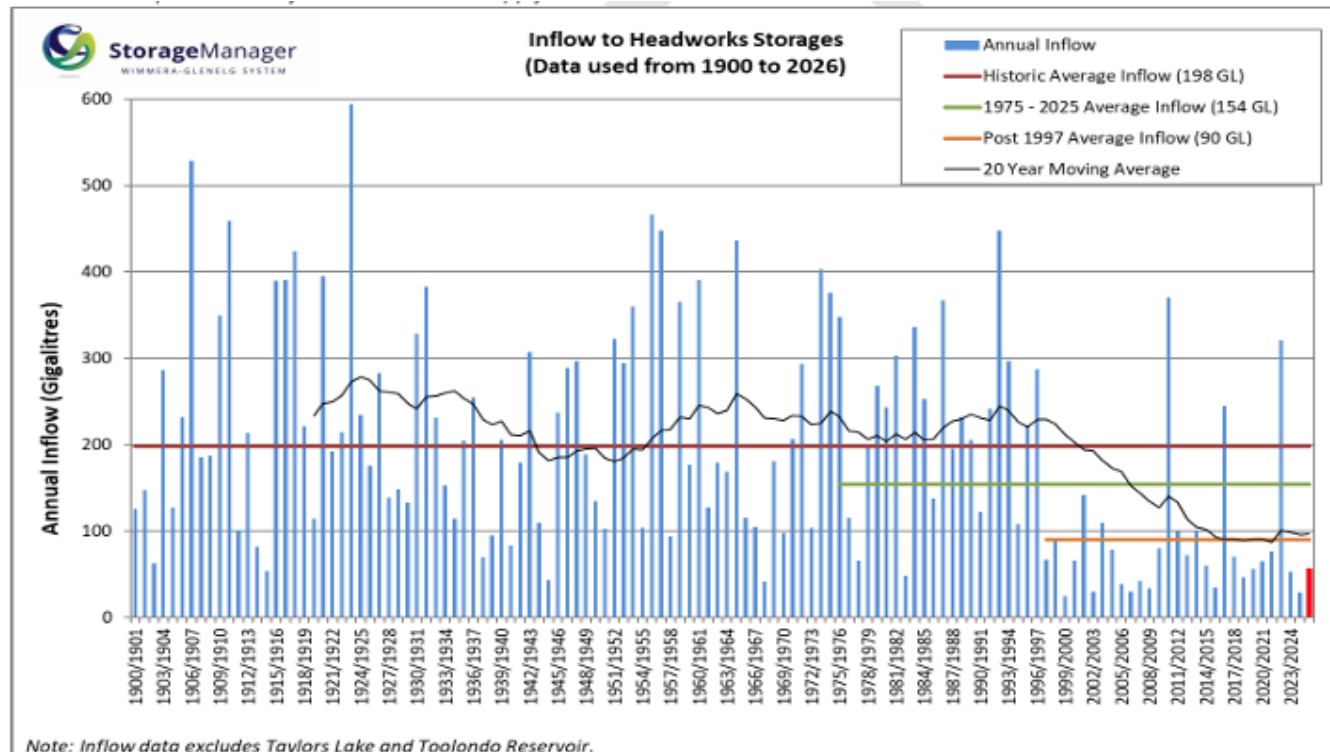
Sustainable Water Strategy Team:

- Jane Ryan, Director Regional Strategy and Partnerships
- Cathy Lewis, Senior Manager Western Region Sustainable Water Strategy
- Grace Quinn-Foster, Senior Policy Officer, Western Region Sustainable Water Strategy



# What is a Sustainable Water Strategy (SWS)?

- Helps plan for water under changing climate conditions
- Opportunity to hear from all stakeholders
- Requirement under the *Water Act 1989*



OFFICIAL



# This is the boundary of the 2011 Western Region SWS



# Why is the Western Region SWS being developed now?

- Need for an update given changes since 2011 *Western Region SWS* such as:
  - Persistent drought and dry conditions
  - Changing regional communities and industries
  - Significant progress in water policy
  - Improved understanding of future threats to water availability and quality
  - Opportunities for new/improved water infrastructure



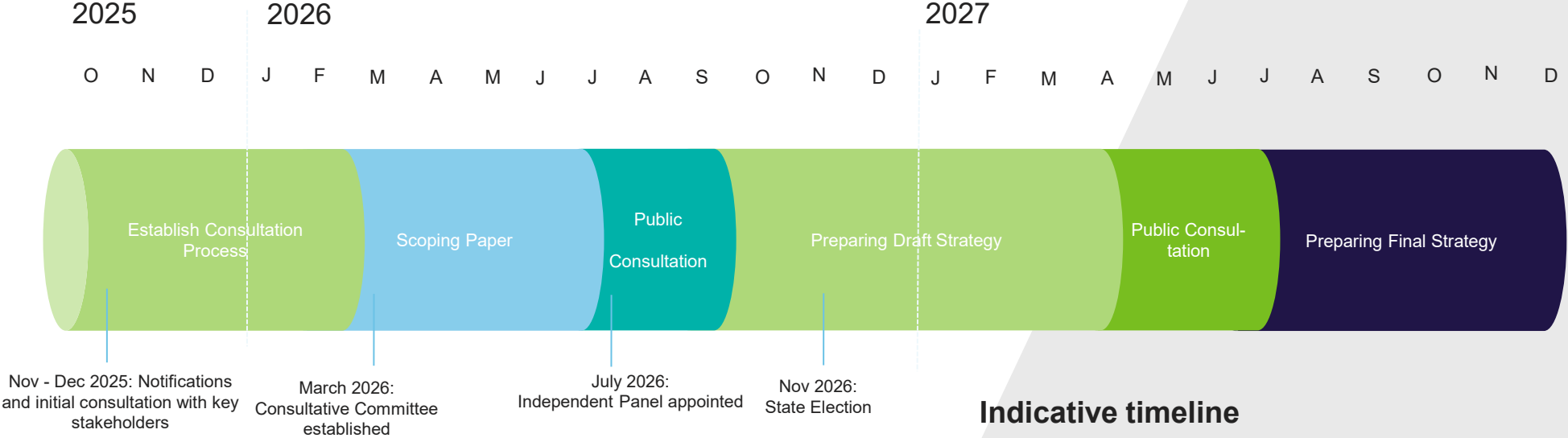
# Considering a future with reduced inflows and other issues

Initial issues for consideration may include:

- Long-term groundwater management
- New/expanding industries in rural and urban areas
- Securing stock and domestic and urban supplies
- Drying waterways
- Aging infrastructure
- Ability to fund the construction and maintenance of infrastructure



# Timeline



# Working Groups

Traditional Owner Working Group
Barengi Gadjin Land Council
Gunditj Mirring Traditional Owners Aboriginal Corporation
DJAARA
Eastern Maar Aboriginal Corporation
Wadawurrung Traditional Owners Aboriginal Corporation
Wamba Wemba Aboriginal Corporation
Nyeri Nyeri and Northern Wergaia Aboriginal Corporation
Dadi Dadi Weki Weki Aboriginal Corporation
Waddi Waddi Traditional Owners
Wiran Aboriginal Corporation
Latji Latji Mumthelang Aboriginal Corporation
Tati Tati Kaiejn
Wadi Wadi Land and Water Indigenous Corporation
Kowang Traditional Owners
Wera Land and Water Corporation
Barapa Barapa

North West Working Group
Community EOI position
Community EOI position
Victorian Farmers Federation
VR Fish
Victorian National Parks Association
Horsham Rural Council on behalf of Rural Councils Victoria
Environment Victoria TBC
Mineral Council Australia (Vic) TBC
Victorian Council of Social Science TBC
Victorian Environmental Water Holder
Coliban Water
Central Highlands Water
GWM Water
North Central CMA
Wimmera CMA
Mallee CMA

South West Working Group
Community EOI position
Community EOI position
South West Food and Fibre
SouthWest Victoria Alliance
Corangamite Shire on behalf of Rural Councils Victoria
Victorian Farmers Federation
Victorian Forest Products Association
VR Fish
Environment Victoria TBC
Victorian Council of Social Science TBC
Barwon Water
Central Highlands Water
GWM Water
Southern Rural Water
Wannon Water
Corangamite CMA
Glenelg Hopkins CMA

# Further Information & Engagement

## How the Community Can Get Involved in Developing the WRSWS

