



**GWM**Water

**Fire Prevention Plan  
Headworks Reservoirs and Storages**

# Fire Prevention Plan - Headworks Reservoirs and Storages

## Table of Contents

1.0	Introduction .....	2
2.0	Fire Preparedness.....	2
2.1	Fire Breaks.....	2
2.2	Controlled Burns .....	3
2.3	Weed Spraying .....	3
2.4	Inspections .....	3
3.0	Fire Prevention .....	3
3.1	Fireplaces and Campfires .....	3
3.2	Access Control .....	4
	Annexure A -Plans of Fire Breaks at Reservoirs and Storages .....	4
	Annexure B – Reservoir Fire Prevention Works.....	16

## Fire Prevention Plan – Headworks Reservoirs and Storages

### 1.0 Introduction

GWMWater is committed to the Integrated Fire Management process and accordingly this plan will outline and identify the activities GWMWater will initiate towards fire prevention.

The Fire Prevention Plan is predicated on the protection of life and property and will be available as a reference for Municipal Fire Management Planning Committees.

GWMWater is responsible for fire preparedness at its reservoirs and storages. As both the perimeter of these sites and the bed of the storage, when dry, are subject to the requirements of native vegetation legislation, fire prevention is accomplished by the maintenance of existing fire breaks and through controlled burns. Some spraying may also be selectively used to keep certain weed species under control, e.g. fairy grass.

This plan relates to the following sites (in alphabetical order):

- Lake Bellfield
- Dock Lake(\*)
- Fyans Lake
- Green Lake
- Lake Lonsdale
- Moora Moora Reservoir
- Pine Lake (\*)
- Rocklands Reservoir
- Taylors Lake
- Lake Toolondo
- Lake Wartook

\*designates Lakes are no longer used for water supply purposes and are generally dry.

## 2.0 Fire Preparedness

### 2.1 Fire Breaks

Fire breaks will be maintained at each site as indicated on the plans contained in Annexure A. Where no native vegetation issues exist, additional fire breaks may be created in consultation with local brigades. The fire breaks will be maintained by cultivation, grading, slashing or spraying.

Often a combination of techniques will be required. The methodology will follow the requirements of Standard Operating Procedure - Fire Preparedness and Prevention (CMS/2345).

## 2.2 Controlled Burns

Controlled burning will take place in co-operation with and be carried out by local Country Fire Authority (CFA) brigades in compliance with Section 42 of the CFA Act 1958.

GWMWater staff will not directly participate in control burn activities. Controlled burning will only be employed under suitable conditions.

The area subject to a controlled burn will be decided after consultation with the CFA Operations Manager, local CFA brigades, the Department of Sustainability and Environment's Biodiversity Officer and adjacent landholders. Areas excluded from burning for ecological reasons are marked on the plans in Annexure A.

The methodology for carrying out controlled burns will follow the requirements of Standard Operating Procedure - Fire Preparedness and Prevention (CMS/2345).

## 2.3 Weed Spraying

Fairy Grass represents a particular problem in dry lake beds. The control of Fairy Grass is the subject of a specific procedure - Control of Fairy Grass at Headworks Reservoirs Procedure (CMS/2556).

Herbicides will be generally only be used where access or safety issues prevent slashing. The methodology for their use will follow the requirements of Standard Operating Procedure - Fire Preparedness and Prevention (CMS/2345).

## 2.4 Inspections

Inspection of fire breaks and lake beds will be carried out annually and a works program developed. The inspection will be coordinated and carried out by GWMWater's Land and Emergency Management Officer, in conjunction with the CFA Catchment Officer and CFA Vegetation Management Officer, where available.

The required works will be carried around October/November being mindful of weather and seasonal conditions to ensure that works are in place prior to the onset of the Fire Danger season.

## 3.0 Fire Prevention

### 3.1 Fireplaces and Campfires

Where appropriate to the zone, properly constructed fireplaces will be maintained, for use by visitors and campers.

# Fire Prevention Plan - Headworks Reservoirs and Storages

Campfires will be controlled through the use of suitable signage and inspections carried out by the GWMWater Ranger at designated camping areas at Lake Lonsdale and Taylors Lake. In addition to these areas caravan/Holiday parks at Lake Fyans and Rocklands Reservoir may be managed by private operators who are responsible for fire protection in these areas. GWMWater Authorised officer can instruct persons to leave recreational area and should seek support from Victoria Police if situation requires.

The GWMWater Ranger is typically engaged from December through to Easter the following year.

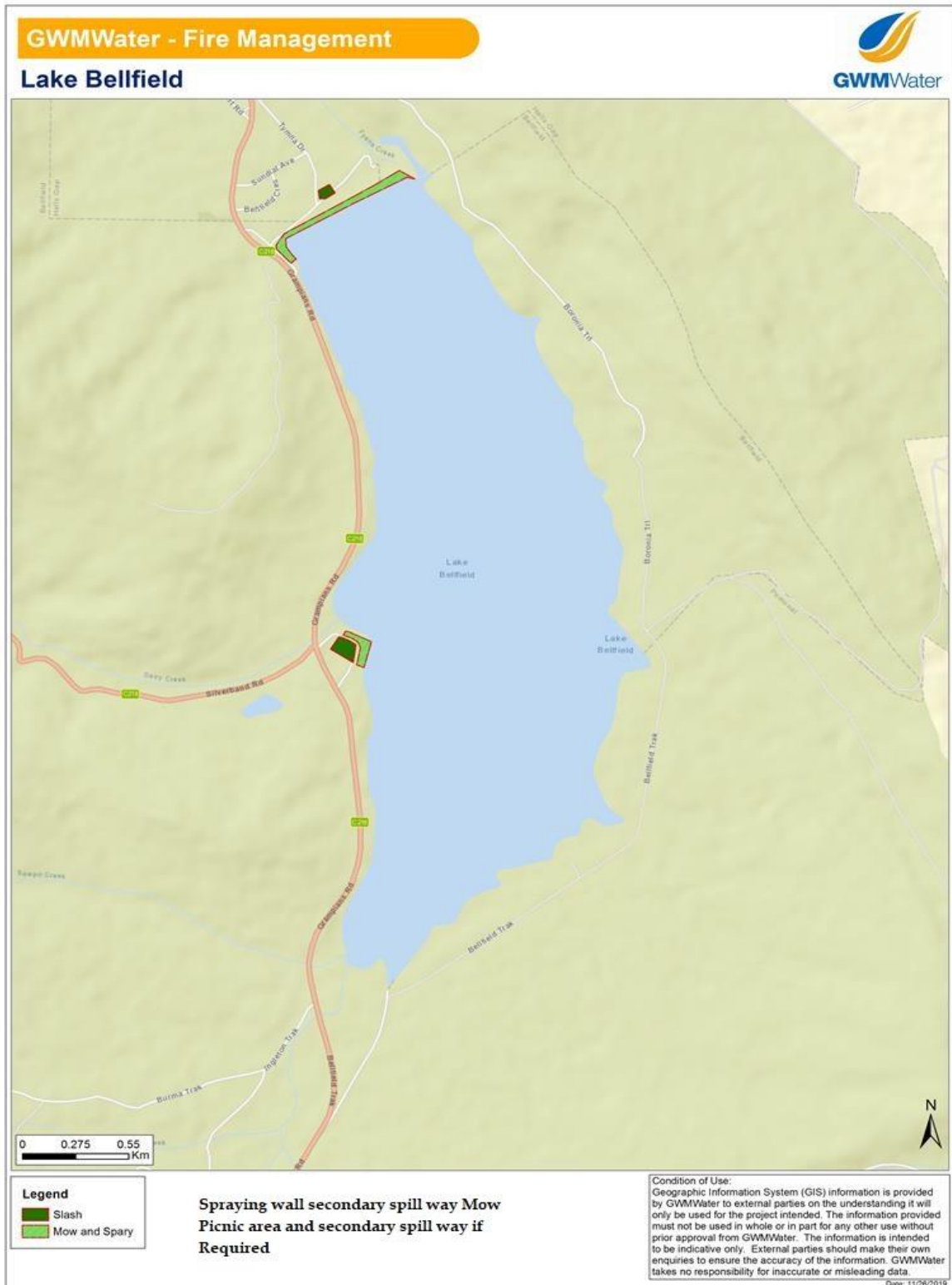
## 3.2 Access Control

Most reservoirs have recreational management plans that specify usage zones. There is no public access to designated operational areas. There is day visitor access at all storages. Camping is currently permitted in designated camping areas at Lake Lonsdale and Taylors Lake. Access is controlled through the use of signage. The GWMWater Ranger is responsible for ensuring camping is undertaken in the designated areas.

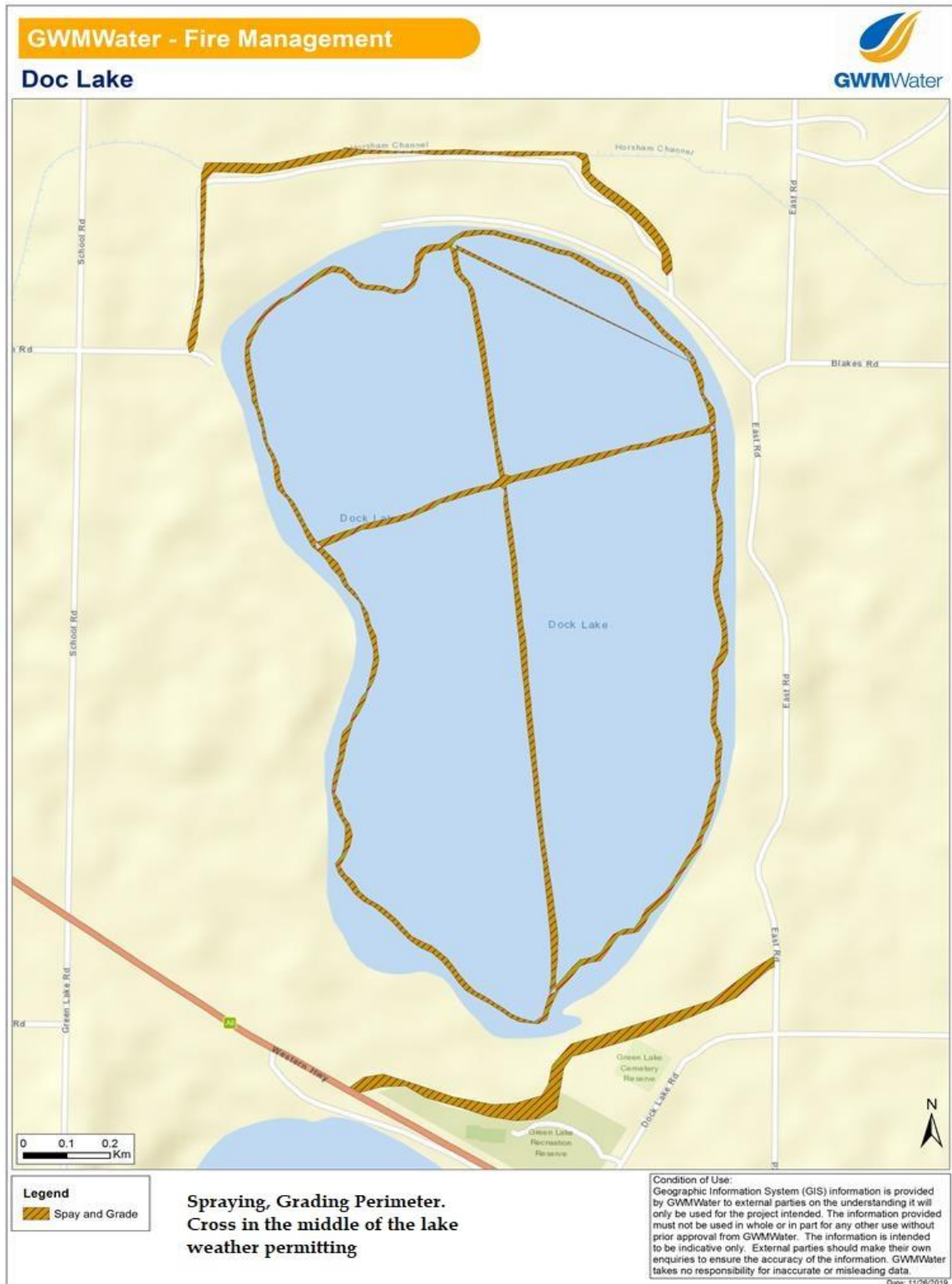
## Annexure A -Plans of Fire Breaks at Reservoirs and Storages

1. Lake Bellfield
2. Dock Lake
3. Fyans Lake
4. Green Lake
5. Lake Lonsdale
6. Moora Moora Reservoir
7. Pine Lake
8. Rocklands Reservoir
9. Taylors Lake
10. Lake Toolondo
11. Lake Wartook

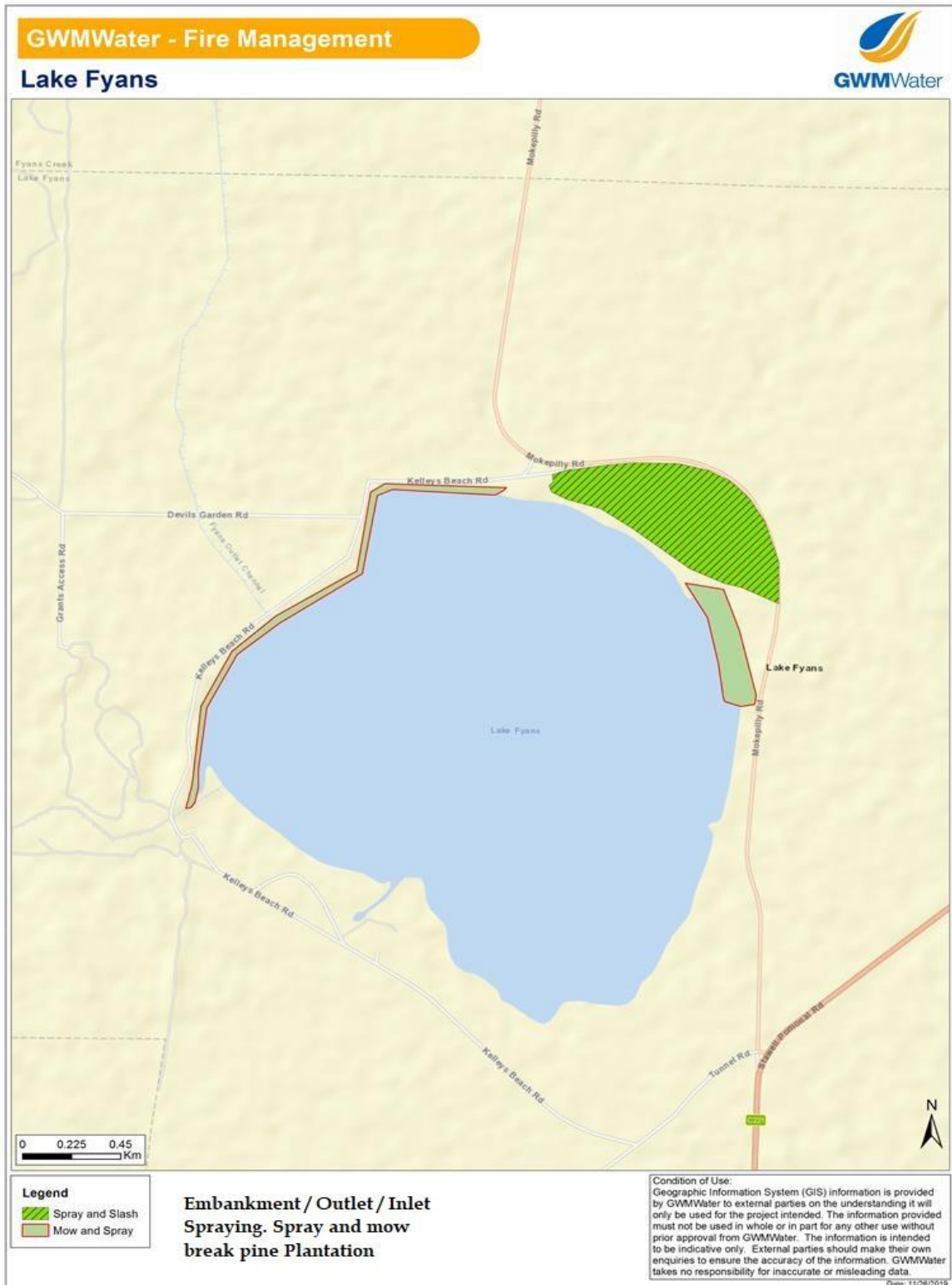
# Fire Prevention Plan - Headworks Reservoirs and Storages



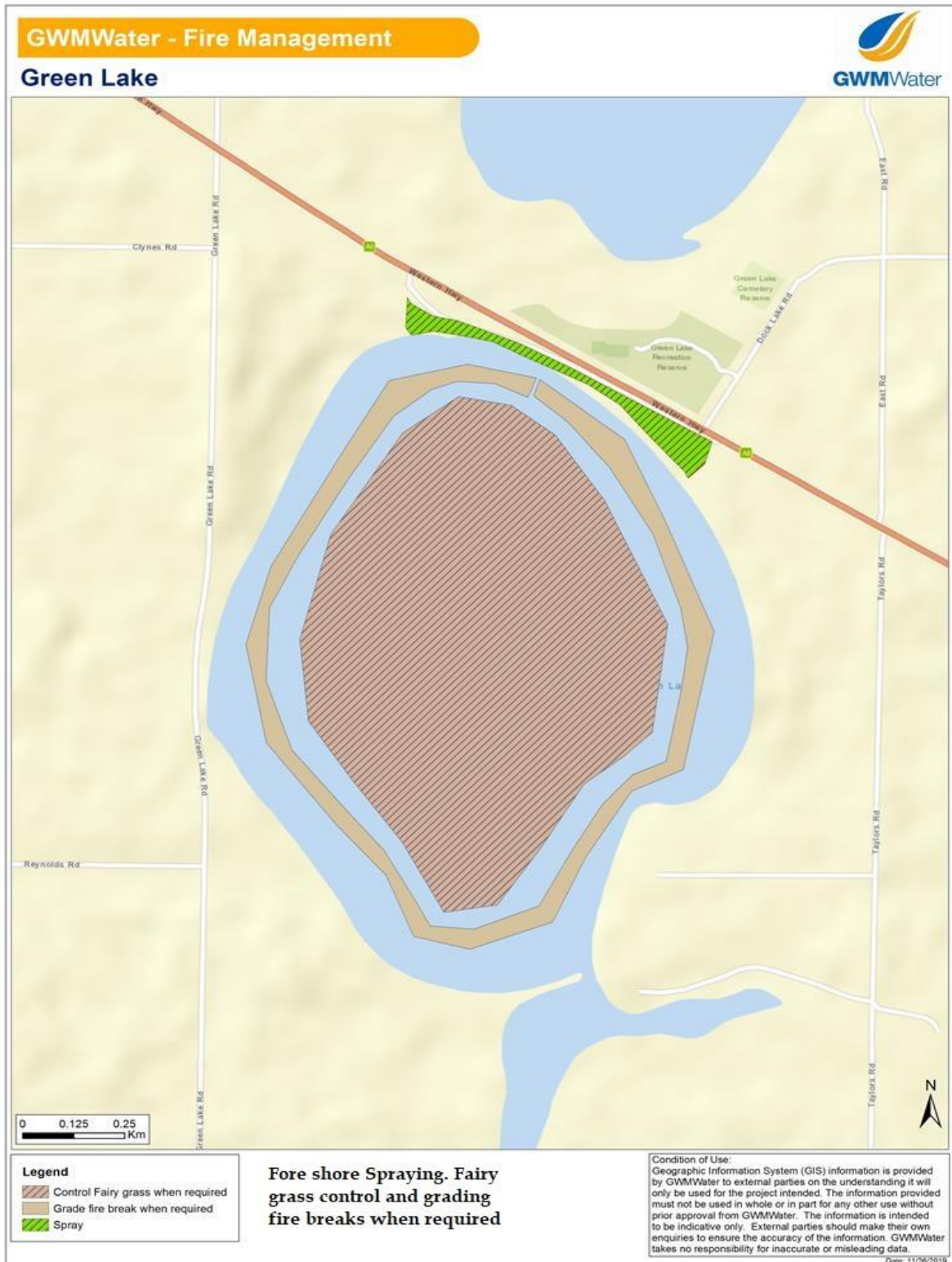
# Fire Prevention Plan - Headworks Reservoirs and Storages



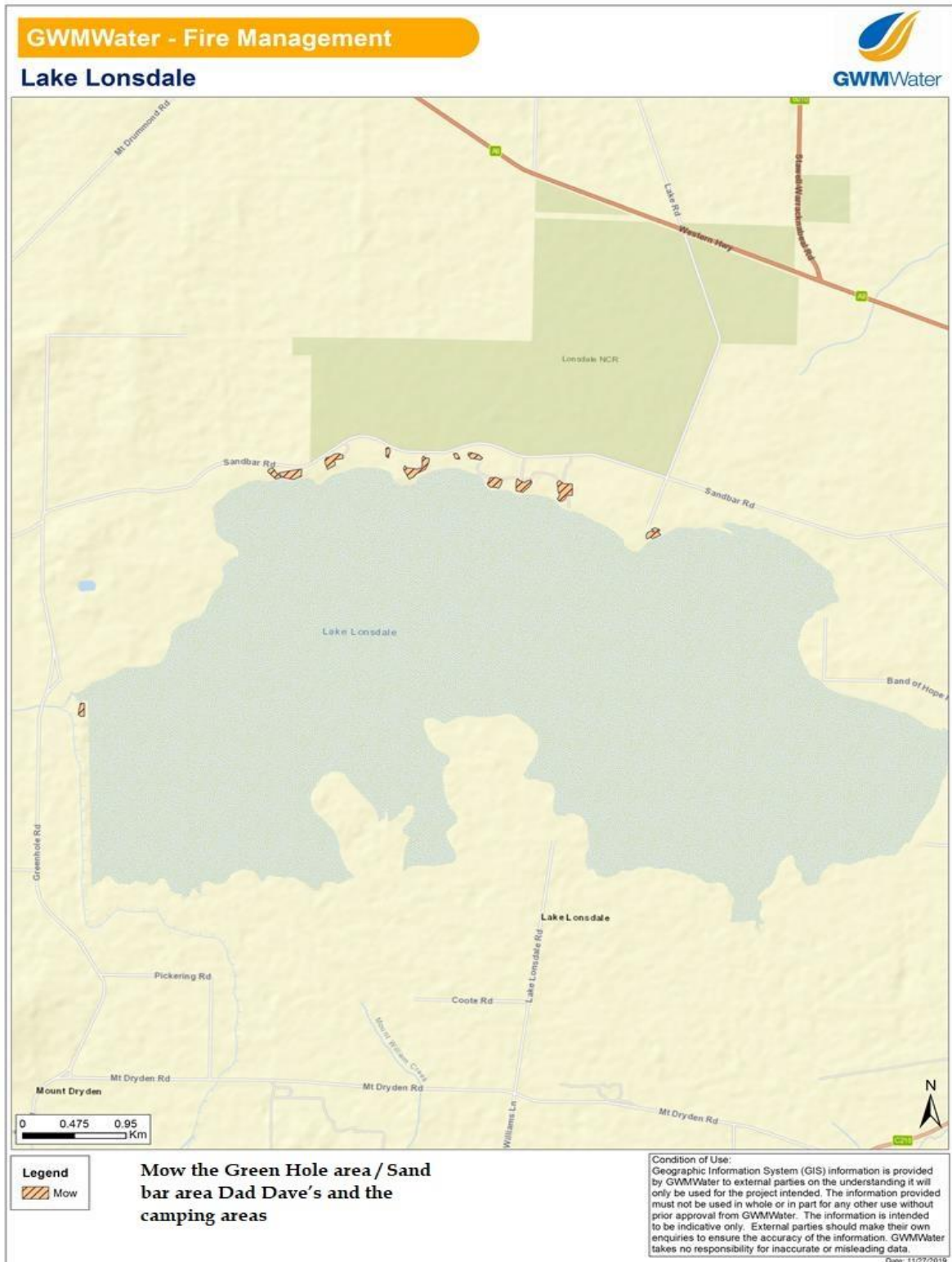
# Fire Prevention Plan - Headworks Reservoirs and Storages



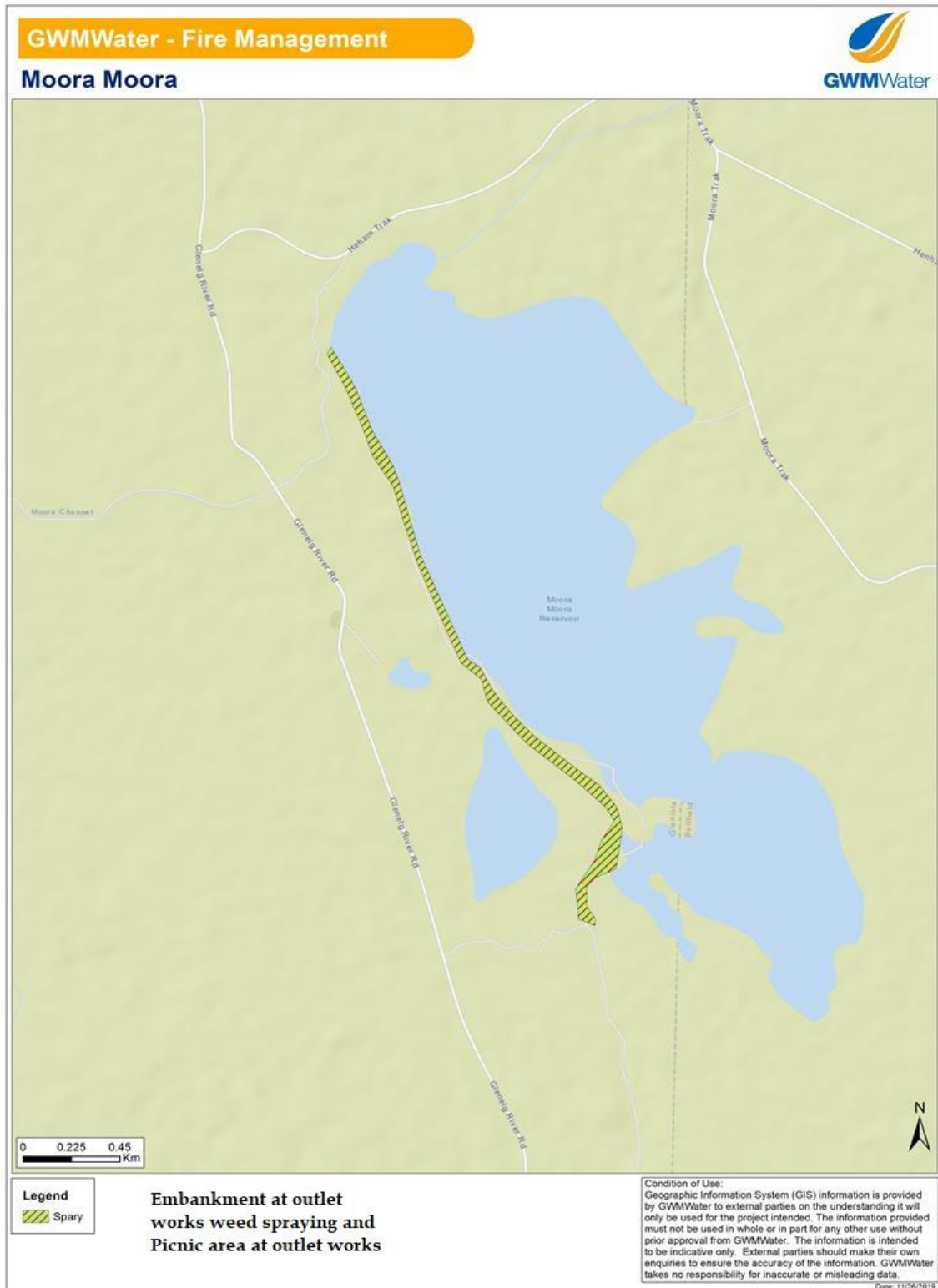
# Fire Prevention Plan - Headworks Reservoirs and Storages



# Fire Prevention Plan - Headworks Reservoirs and Storages



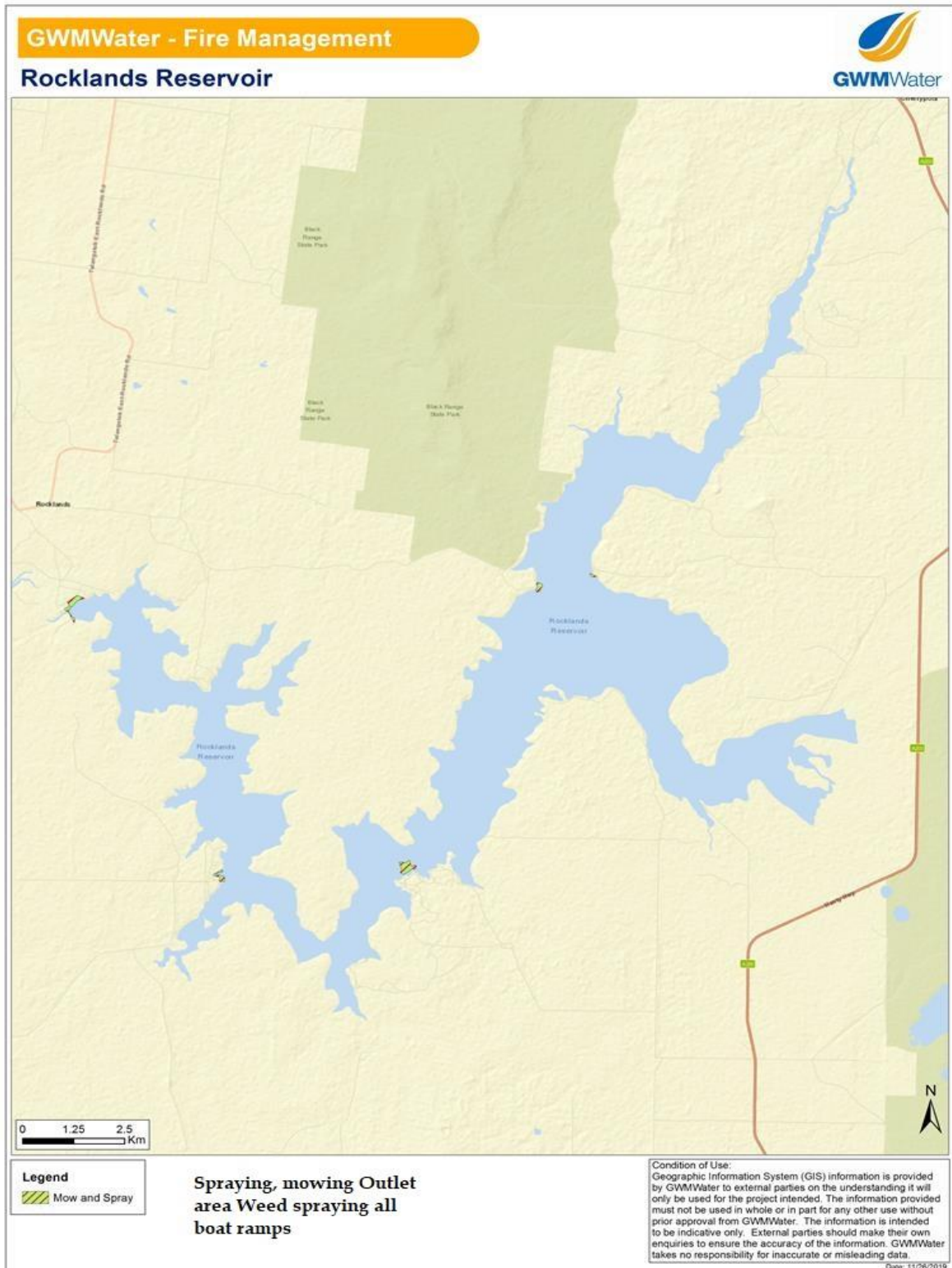
# Fire Prevention Plan - Headworks Reservoirs and Storages



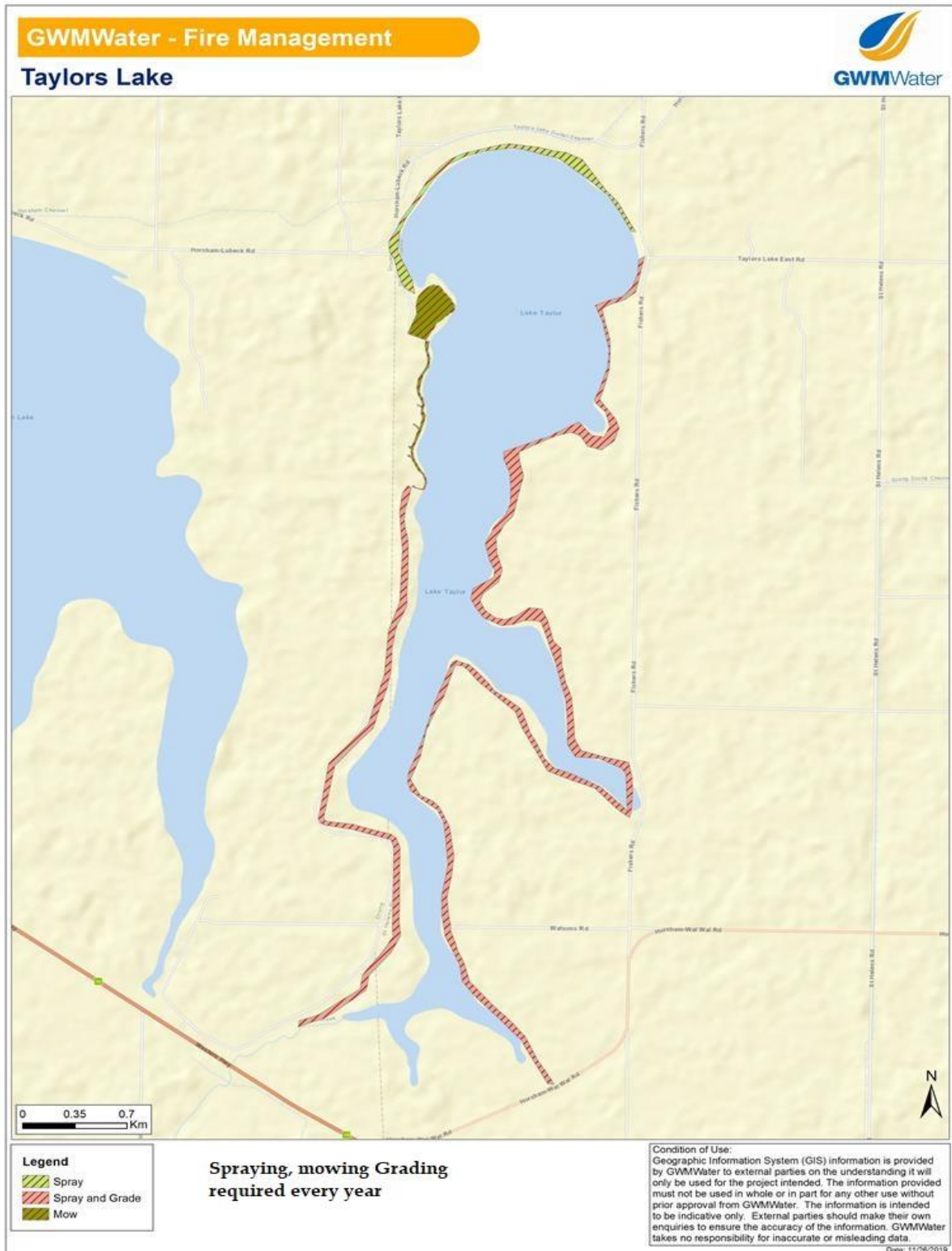
# Fire Prevention Plan - Headworks Reservoirs and Storages



# Fire Prevention Plan - Headworks Reservoirs and Storages



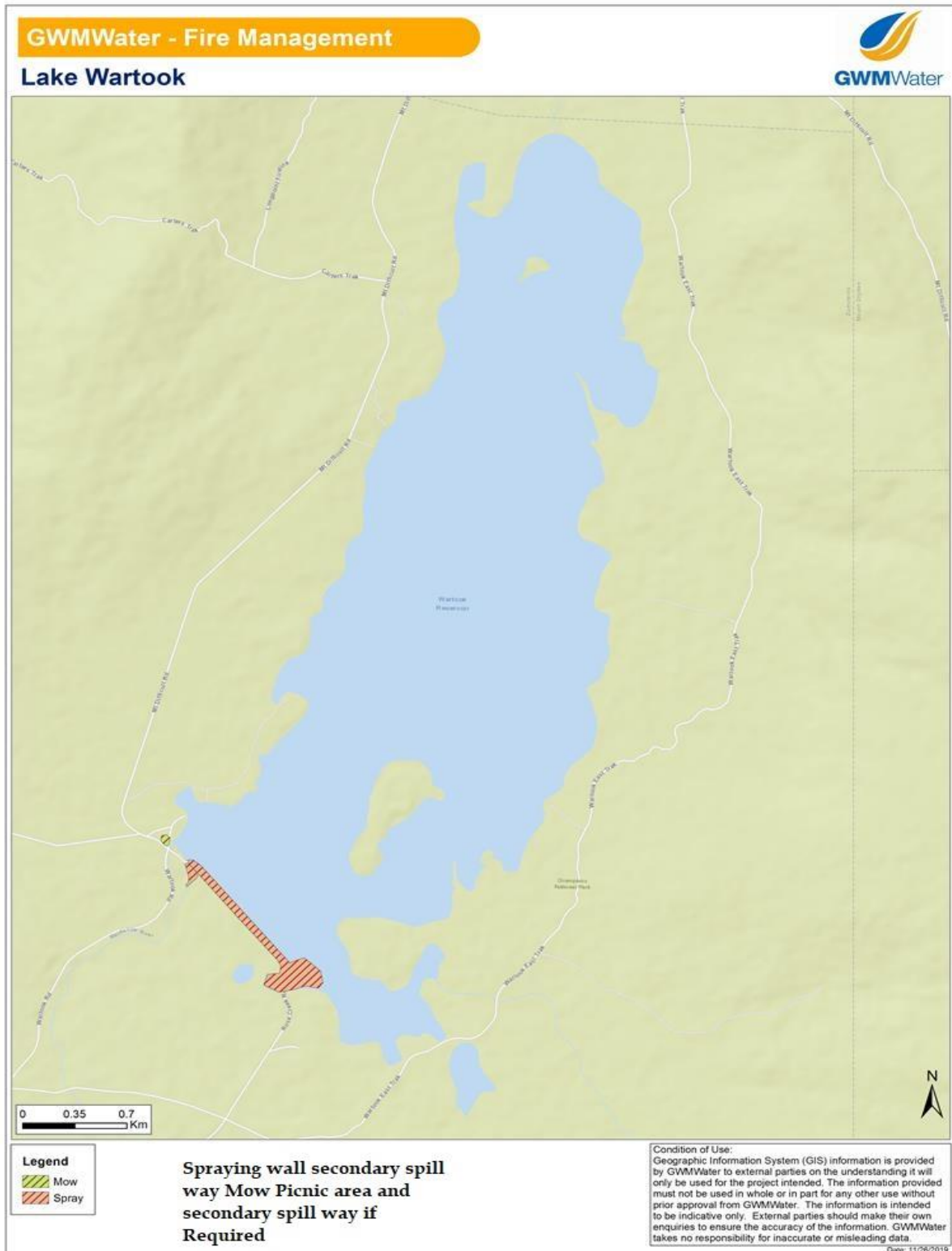
# Fire Prevention Plan - Headworks Reservoirs and Storages



# Fire Prevention Plan - Headworks Reservoirs and Storages



# Fire Prevention Plan - Headworks Reservoirs and Storages



# Fire Prevention Plan - Headworks Reservoirs and Storages

## Annexure B – Reservoir Fire Prevention Works

Reservoir	Work Tasks	Carried Out	Follow Up
Dock Lake	Follow up the grading of existing & new fire breaks as per proposal endorsed by CFA	Around November / December taking into account and mindful of weather conditions & hazards	November December
Green Lake	There is no need to follow up the grading of existing fire breaks due to the water level and annual “top-up” of this Lake	If the lake ever goes dry, new fire breaks will need to be constructed.	Firebreaks have been identified but not enacted unless lake gets drier
	Weed control along fore shore and ramps to be done by local shire	Pending weather conditions and weed growth activity	As required
Taylors Lake	Follow up the grading of existing fire breaks as per GIS location maps.	Around November / December taking into account weather conditions & hazards	November December
	West side camping area responsible of DELWP fuel reduction burn	<b>Vehicle &amp; walking track also acts as a fire break for Western area</b>	November December
	East side of the boat ramp area and newly constructed access road.	East side camping area to be part of DELWP fuel reduction burn	November December

# Fire Prevention Plan - Headworks Reservoirs and Storages

Reservoir	Work Tasks	Carried Out	Follow Up
	Back burning around camping area.	<b>Responsibility of local DELWP</b>	Annually November December
	Weed control along foreshore and ramps	Pending weather conditions and weed growth activity	As required
	Weed spraying around the base of trees and shrubs	Pending weather conditions and weed growth activity	As required
	Weed spraying along embankment crests	Pending weather conditions and weed growth activity	As required
Lake Toolondo	Spraying of fairy grass when Lake is dry	Around November / December or take into account weather conditions & hazards	As required
	Weed control along fore shore and ramps	Pending weather conditions and weed growth activity	Annually
	<b>Mowing Barbeque day visit area at main boat ramp and GWMWater land behind caravan park</b>	<b>Around October November depending on weather and seasonal conditions</b>	<b>Annually</b>
	Ploughing of fire break between lake and fore shore by fore shore committee	Pending weather conditions and weed growth activity	Annually around November December

# Fire Prevention Plan - Headworks Reservoirs and Storages

Reservoir	Work Tasks	Carried Out	Follow Up
Pine Lake	Follow up the grading of existing fire breaks as per GIS location maps. This will depend on water levels in the Reservoir	Around November / December or take into account weather conditions & hazards	November December
	Weed spraying along embankment crests	Pending weather conditions and weed growth activity	As required