



# recreational lakes and weirs

**GWM**Water

11 McLachlan Street  
(PO Box 481)  
Horsham Victoria 3402

**Tel:** 1300 659 961

**Fax:** 03 5381 9881

**Email:** [info@gwmwater.org.au](mailto:info@gwmwater.org.au)

**Website:** [www.gwmwater.org.au](http://www.gwmwater.org.au)

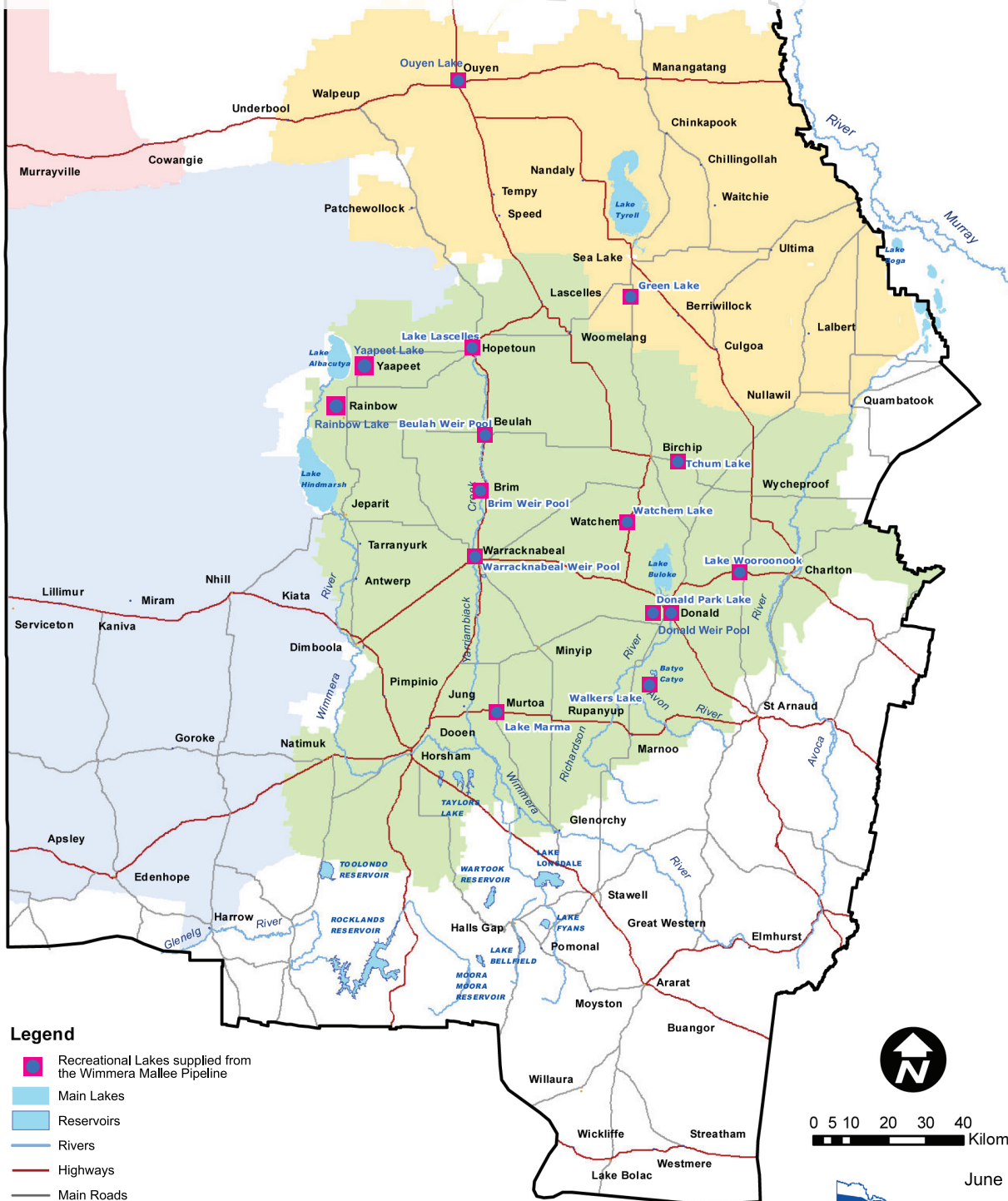
We place a high value on lakes and weir pools in our region because of the environmental benefits, the opportunities for local communities to enjoy recreational activities, and the visitors they attract to our region.

Our rural pipelines supply water to 14 recreational lakes and weir pools with 12 of them supplied from the Grampians reservoir system through the Wimmera Mallee Pipeline. This is made possible under a 3090 ML recreation water entitlement held by us specifically for this purpose.

Ouyen Lake and Green Lake (near Sea Lake) are supplied water from our Murray River allocations.

We also supply water to three small recreational water bodies, namely Rainbow Lake, Yaapeet Lake and Donald Weir Pool.

*Certified to best practice standards  
ISO 9001 / 14001 and AS/NZS 4801*

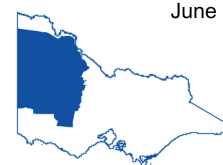


## Legend

- Recreational Lakes supplied from the Wimmera Mallee Pipeline
- Main Lakes
- Reservoirs
- Rivers
- Highways
- Main Roads
- Pipeline supplied from Murray River
- Pipeline supplied from Grampians System
- West Wimmera Groundwater Management Area (GMA)
- Murrayville Water Supply Protection Area (WSPA)



0 5 10 20 30 40  
Kilometres



June 2022